

Integrating Project Mentor within Microsoft Project

Introduction

The following instructions illustrate how to modify the integration of Project Mentor within the Microsoft Project Standard or Microsoft Project Professional interface. Once successfully integrated, you can seamlessly switch between Lessons, References and Exercises whilst experiencing for real your results within Microsoft Project itself.

If you have not already gone through the integration process, please see the step-by-step instructions in the Project_Mentor_MSP.PDF document on the Project Mentor CD or downloaded from the Project Learning website.

DO NOT run the Integrate.MPP macro more than once. Doing so will create an error in the macro definition. If you have a corrupted macro, review the "Editing a corrupted macro" instructions later within this document.

Please note that integration is not possible in Microsoft Project 2000 or older Microsoft Project versions.

Installation locations

By default, Project Mentor version 2.01 and later is installed to the following folders:

C:\Program Files\projectlearning.net\Mentor_MSP - for use within Microsoft Project.

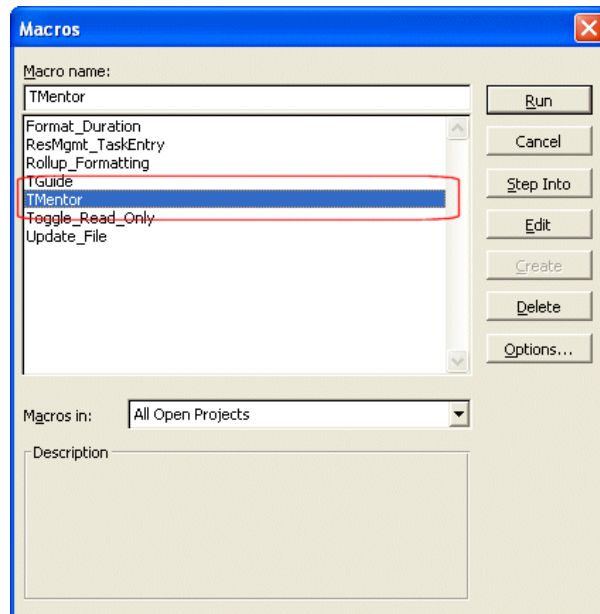
C:\Program Files\projectlearning.net\Mentor_IE - for use within Internet Explorer.

If you are upgrading Project Mentor from a previous version, or you are accessing Project Mentor across a lan, you may need to edit the integration macro to correctly locate the necessary Project Mentor files.

Updating the Integrate.MPP macro

The instructions below relate to upgrading Project Mentor from version 1.x or 2.0 to versions 2.01 and later:

1. Start Microsoft Project 2007/2003/2002.
2. From the Tools menu, select Macro, followed by Macros.
3. Select the TMentor macro as illustrated below, then click Edit.



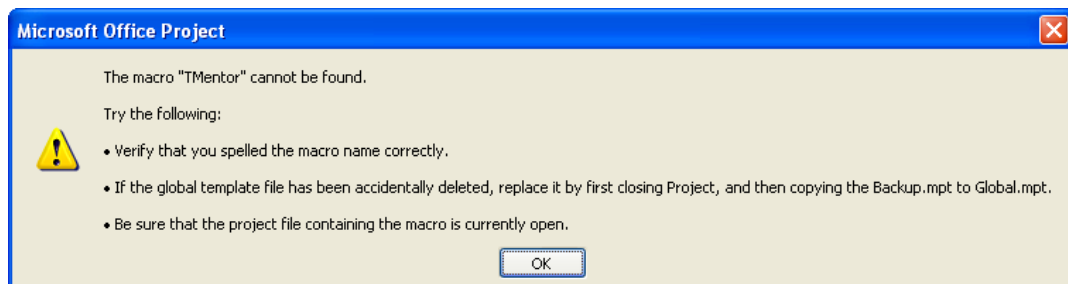
4. Within the macro editor, find the following text string which will be listed twice:
"C:\Program Files\projectlearning.net\Mentor\Mentor_Int.htm"
5. Replace each string with:
"C:\Program Files\projectlearning.net\Mentor_MSP\Mentor_Int.htm"
6. Click the Save button to save the macro to the Global.MPT file on your local PC.
7. Close the macro editor.

The buttons on the Mentor toolbar should now allow you to successfully switch between Project Mentor and Microsoft Project:



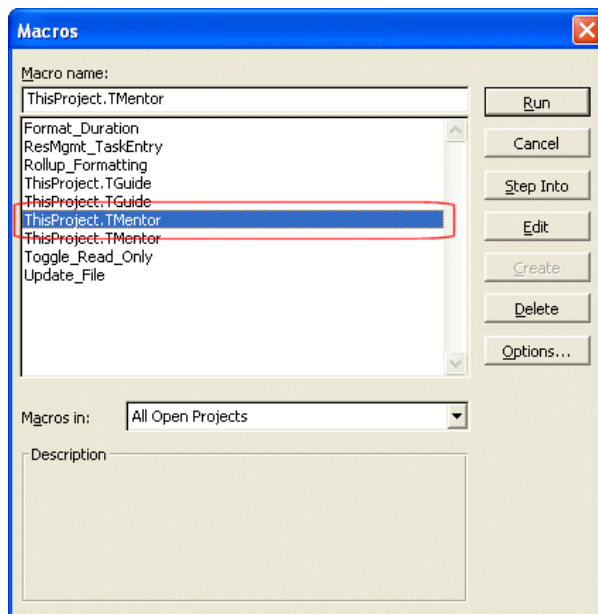
Editing a corrupted macro

Sometimes, the integration macro can become corrupted (for example when the Integrate.MPP file is opened more than once). With a corrupted macro, you would normally get the following error message when trying to access Project Mentor:

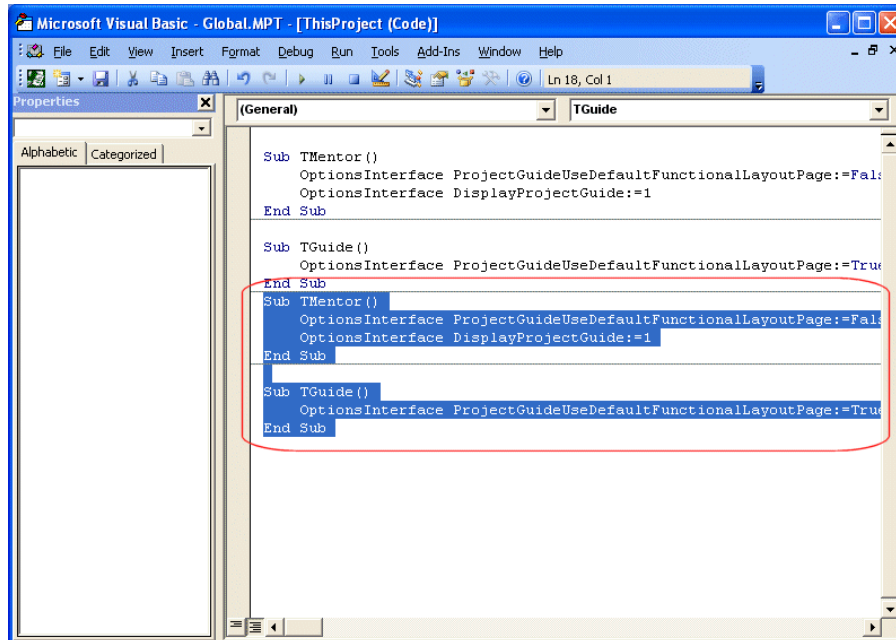


If this is the case, to repair the macro you should:

1. Start Microsoft Project 2002/2003/2007.
2. From the Tools menu, select Macro, followed by Macros.
3. Select the one of the duplicated TMentor macros as illustrated below, then click Edit.



4. Within the macro editor, select the old macro code that has been duplicated (this will be at the base of the page):



The screenshot shows the Microsoft Visual Basic editor window titled "Global.MPT - [ThisProject (Code)]". The window contains a menu bar (File, Edit, View, Insert, Format, Debug, Run, Tools, Add-Ins, Window, Help) and a toolbar. The Properties window on the left is set to "Alphabetic" and "Categorized". The main code window shows the following VBA code:

```
Sub TMentor ()  
OptionsInterface ProjectGuideUseDefaultFunctionalLayoutPage:=False  
OptionsInterface DisplayProjectGuide:=1  
End Sub  
  
Sub TGuide ()  
OptionsInterface ProjectGuideUseDefaultFunctionalLayoutPage:=True  
End Sub  
  
Sub TMentor ()  
OptionsInterface ProjectGuideUseDefaultFunctionalLayoutPage:=False  
OptionsInterface DisplayProjectGuide:=1  
End Sub  
  
Sub TGuide ()  
OptionsInterface ProjectGuideUseDefaultFunctionalLayoutPage:=True  
End Sub
```

A red rectangular box highlights the second and third subroutines (TMentor and TGuide) at the bottom of the code, which are identical to the first two subroutines at the top. The code in the highlighted area is selected.

5. Press the DELETE key to remove the unwanted code.
6. Click the Save button to save the macro to the Global.MPT file on your local PC.
7. Close the macro editor.